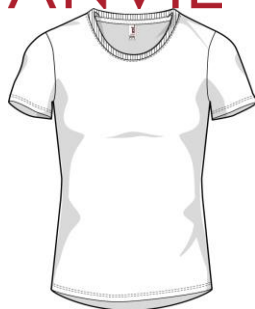


**ANVIL®**



**6750L**



**Women's Tri-Blend Tee**

**DETAILS**

**Weight**

**Content**

**Yarn Count**

**Features**

159.0 G/SqM  
 50% Polyester, 25% Combed Ring Spun Cotton, 25% Viscose  
 32/1  
 High stitch density for smoother printing surface  
 Semi-fitted contoured silhouette with side seam  
 Wicking properties  
 Shoulder-to-shoulder tape and seamed collar  
 Twin-needle sleeve and curved bottom hem  
 TearAway label

Oeko-Tex® Standard 100 Certified

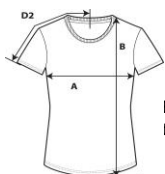
**Sizes**

**Case Packs**

**Colours**

**SKU's**

XS-2XL  
 XS - 2XL 36 PIECES  
 15  
 90



**B)  
 ire back) (D2)**

**Chest (A)**

**Length from HPS (B)**

**Sleeve length (centre back) (D2)**

	Tol-	Tol+	XS	S	M	L	XL	2XL
	1.905	1.905	38.100	40.640	45.720	50.800	55.880	60.960
	2.540	2.540	63.500	64.770	67.310	69.850	72.390	74.930
	1.905	1.905	33.020	34.290	35.560	38.100	39.370	41.910
	Tol-	Tol+	XS	S	M	L	XL	2XL
	0.750	0.750	15.000	16.000	18.000	20.000	22.000	24.000
	1.000	1.000	25.000	25.500	26.500	27.500	28.500	29.500
	0.750	0.750	13.000	13.500	14.000	15.000	15.500	16.500

**XS-2XL**

**COLOURS**

- Black
- Heather Aubergine
- Heather Blue
- Heather Bronze
- Heather Caribbean Blue
- Heather Dark Green
- Heather Dark Grey
- Heather Galapagos Blue
- Heather Green
- Heather Grey
- Heather Orange
- Heather Purple
- Heather Raspberry
- Heather Red
- White

- Code
- 036
- 479
- 321
- 744
- 519
- 518
- 334
- 480
- 322
- 346
- 259
- 232
- 473
- 234
- 030

**CHANGES**

Total Net Change 0 SKU's